

Gallant C

“BURN-WET” TYPE POU ABATEMENT



www.gst-international.com
sales@gst-international.com
+1.408.685.2199

Exhaust solution for high-volume display manufacturing



Applications

- > Display processes

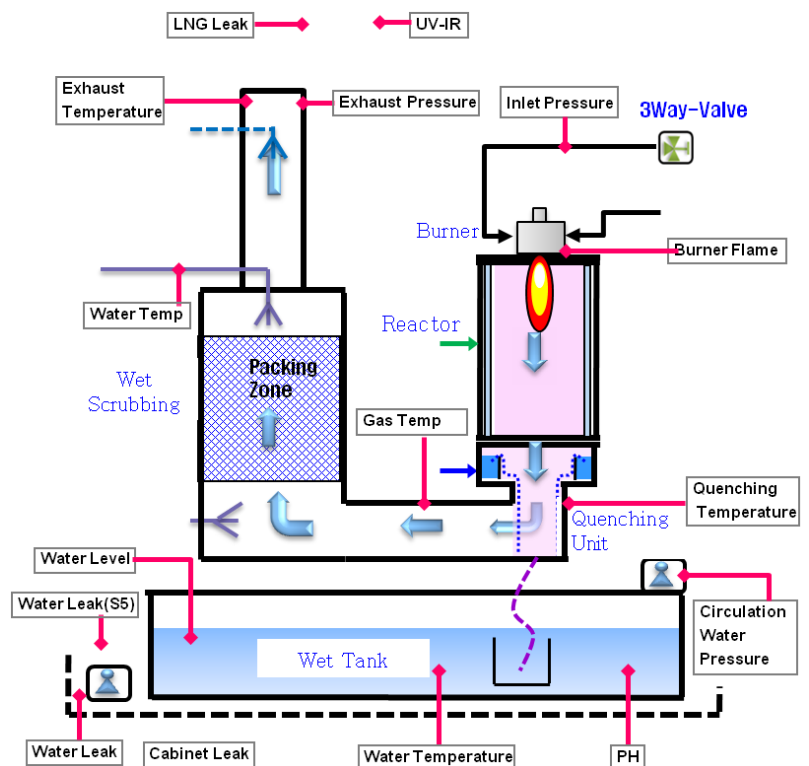
Features

- > Dual-stage combustion
- > Independent Fuel/O₂/Air control
- > ACCS (Air Curtain Cleaning System)
- > Built-in bypass valve
- > Flash data recording capability
- > High/Low fuel interface
- > Integrated redundant abatement option
- > Heater jacket option
- > pH adjust option: NaOH injection
- > Auto inlet entry clean option
- > Natural (gravity) drain standard / pump drain option

Benefits

- > High capacity abatement
- > Low NO_x and CO emissions
- > High abatement efficiency
- > Low utility consumption
- > Energy savings operation ready
- > HVM (high volume manufacturing) proven

System Specifications



- Total System Capacity: **1200 slm**
- Per Inlet Capacity: **300 slm**
- Process Inlets: **2 inlets, NW40 / 1 Bypass, NW 50**
- MTBF: **> 4,320 hours**
- MTTR: **< 1 hour**
- MTTP: **< 0.5 hour**

Gallant C

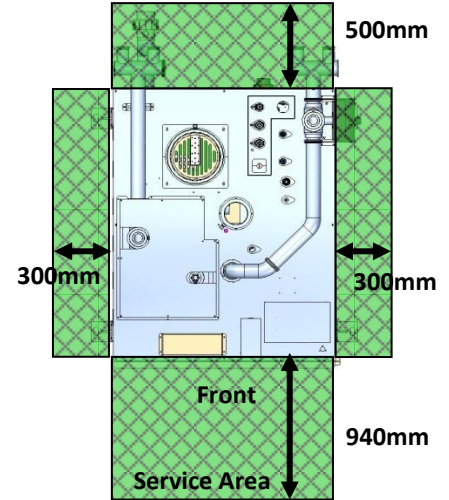
“BURN-WET” TYPE POU ABATEMENT

Exhaust solution for high-volume display manufacturing

Dimensions and Weight

Gallant C

Dimension (W x D x H in mm)	940 x 1200 x 1950 (2160)
Weight (kg)	700



Utilities

Item	Type	Typical Usage (per reactor)		Connection Type	
		Low Flame	High Flame	Gallant C	
Electricity	208VAC 3 Phase	2.2 KW			
LNG	0.3 ~ 1.8 kg/cm ²	15 SLM	30 SLM	½" VCR	
O2	3 ~ 4 kg/cm ²	16 SLM	30 SLM	½" SS compression	
CDA	5 ~ 6.5 kg/cm ²	120 SLM	150 SLM	¾" SS compression	
GN2	3 ~ 6 kg/cm ²	30 SLM		¼" SS compression	
City Water	3 ~ 6 kg/cm ²	4 L/min		½" SS compression	
Cooling Water	3 ~ 6 kg/cm ²	20 L/min		½" SS compression	
Drain Water	Acid Drain	4 L/min		Pump : 15A PVC union	Natural : 50A PVC union
Gas Exhaust	-50 ~ -80 mmH2O	1.5 m ³ /min		MF200 Flange	
Cabinet Exhaust	-30 ~ -60 mmH2O	4.5 m ³ /min		MF100 Flange	
NaOH (option)	0.5 ~ 1 kg/cm ²	50% 8.4 kg/day		1 ½" PVC double containment	

Environment

- Clean and dry environment
- Temperature: 5 ~ 27 °C
- Relative Humidity: < 55%

Abatement Noise Level

- Normal operation at ≤80 dB(A)